

ACCESS TO BASIC SOCIAL SERVICES - TRIPOLI, LIBYA

IDP settlements

As part of the IDP Protection Monitoring Assessment conducted by Mercy Corps in collaboration with UNHCR and Moomken, social services have been mapped out together with municipalities to identify basic needs in the following areas:

- Health
- Education
- Shelter: IDPs camp
- WASH
- Protection
- Livelihoods

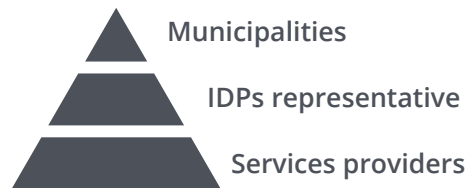
Three areas were chosen in collaboration with local partners to assess the basic social service provision in:

- 📍 Janzour
- 📍 Abu Salim
- 📍 Tripoli Center

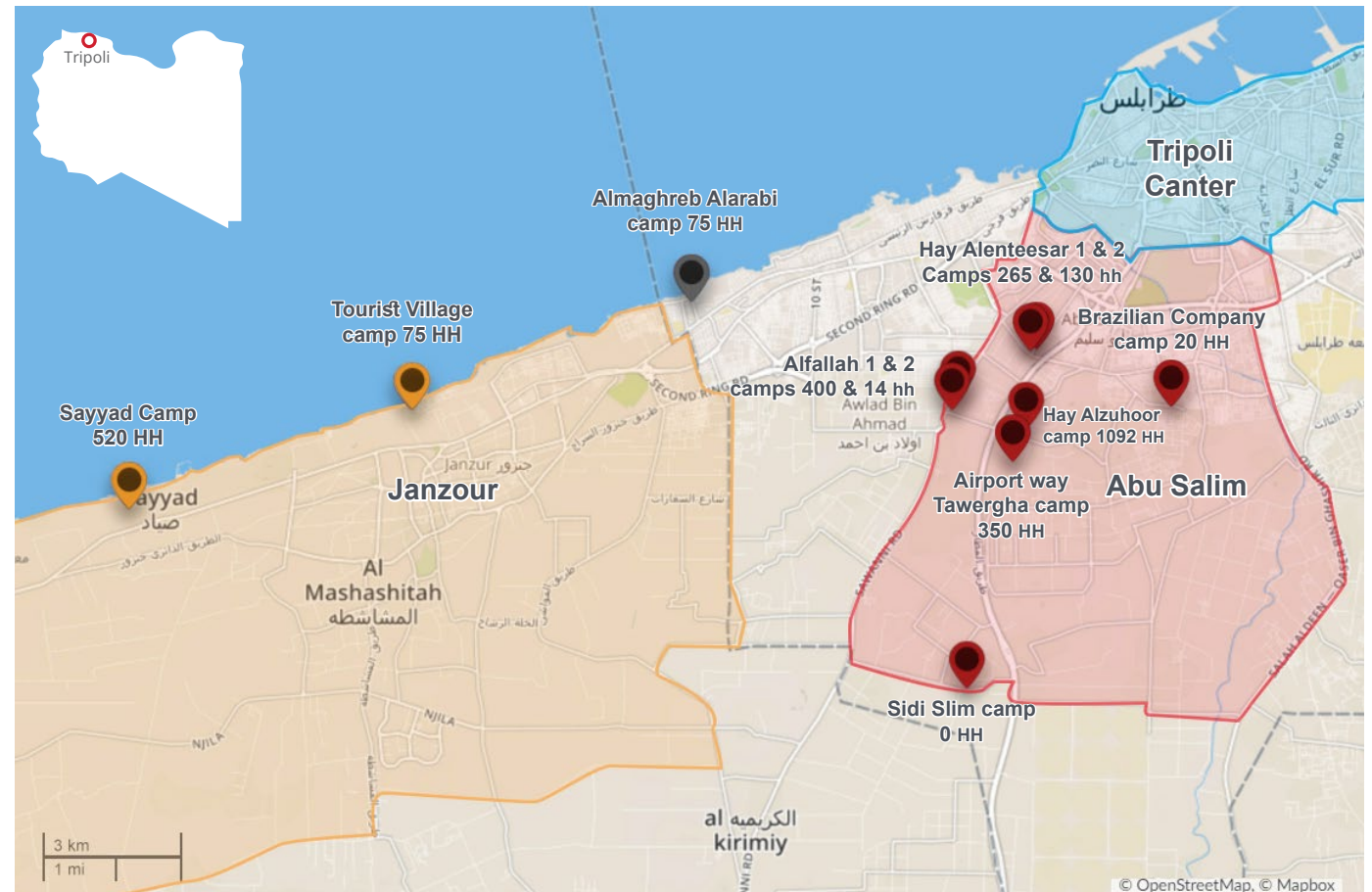
In collaboration with local partner Moomken and municipality representatives, the most vulnerable IDPs were accessed in Janzour, Abu Salim and Tripoli city Centre, where the most important basic social services are provided to IDPs and migrants.

Data collection

Data collection based on 3 Layers:



IDP settlements location



Sources: Mapping of basic social services, Ushahidi

Legend:

IDP Settlements - Janzour municipality	Janzour Municipality
IDPs Settlements - Janzour municipality	Abu Salim Municipality
IDPs Settlements - Other municipality	Tripoli Center Municipality



The logo above is linked to USHAHIDI platform which give you a full access to data collected.



IDPs Settlement

Tourist Village settlement

■ IDPs: 470 (75 HH)



IDPs Origin City:

- Janzour
- Kikla
- Wersheffana
- Nalut
- Benghazi
- Sirte
- Regdaleen
- Azzawia

NEEDS

	Critical	Critical
	Very Critical	Critical
	No external latrines	Non-critical
	Non-critical	

ACCESS

Perception of needs:

Non-critical

Perception of access to the camp:

Non-critical

TOURIST VILLAGE SETTLEMENT

1 Non functional Health center

No staff / No supplies

Damaged building

30 min Average walking time to the nearest health center

Moderately satisfied access to health facilities

Health

Shelter

Land Property Concerns

Houses: **Finished building**

Camp density: **345 m² / IDPs**

Protection

NO training on the risks of landmines or unexploded ordinance.

35 min Average walking time to nearest services.

Satisfied access to protection services.

Child protection

1 Child friendly space

30 min Average walking time to markets

Moderately satisfied access to food and NFIs

Livelihood

TOURIST VILLAGE SETTLEMENT

Road

Accessible by heavy truck
No functional artificial lighting

Sanitation

Waste Management Services
No water standing (flooded, eroded)

Education

0 Schools in the camp

25 min Average walking time to nearest school

Moderately satisfied by access to schools

Water

Source for drinking: **Main water network**

Very Critical water supply and pipes services.

Latrines

Private Access to Latrines
No External Latrines



IDPs Camp

Sayyad settlement

■ IDPs: 3155 (520 HH)



■ IDPs Origin City:

- Tawergha

	NEEDS	ACCESS
	Critical	Critical
	Very critical	Critical
	Non-critical	Non-critical
	Very critical	Non-critical

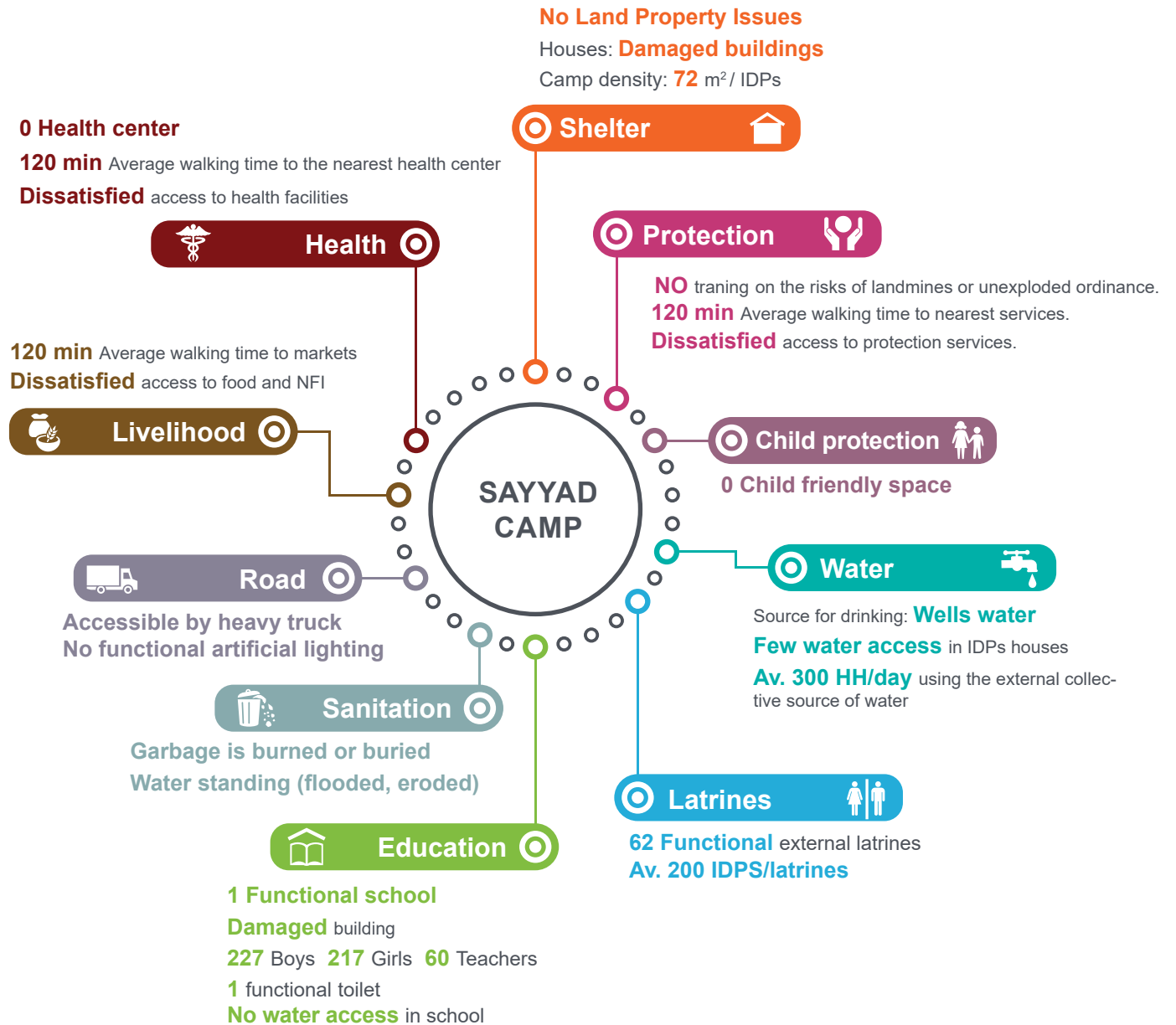
Perception of needs:

Very Critical

Perception of access to the camp:

Very Critical

SAYYAD SETTLEMENT





IDPs Camp

Alfallah 1 settlement

■ IDPs: 1100 (265 HH)

No data available

No data available

No data available



Average of 4 per/HH

IDPs Origin (city):

- Tawergha

	NEEDS	ACCESS
	Critical	Very Critical
	Very Critical	Critical
	Non-critical	Very Critical
	Very Critical	Non-critical

Perception of needs:

Very Critical

Perception of access to the camp:

Non-Critical

ALFALLAH 1 SETTLEMENT

No Land Property Issues

Houses: **Damaged pre-fabricated houses**

Camp density: **52 m² / IDPs**

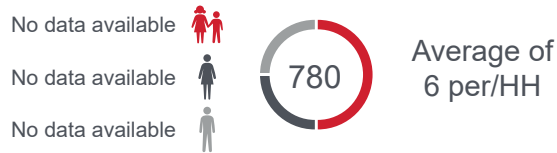




IDPs Camp





Alfallah 2 settlement

■ **IDPs:** 780 (130 HH)



■ **IDPs Origin City:**

- Tawergha

	NEEDS	ACCESS
	Critical	Critical
	Very Critical	Critical
	No external latrines	Non-critical
	Non-critical	Non-critical

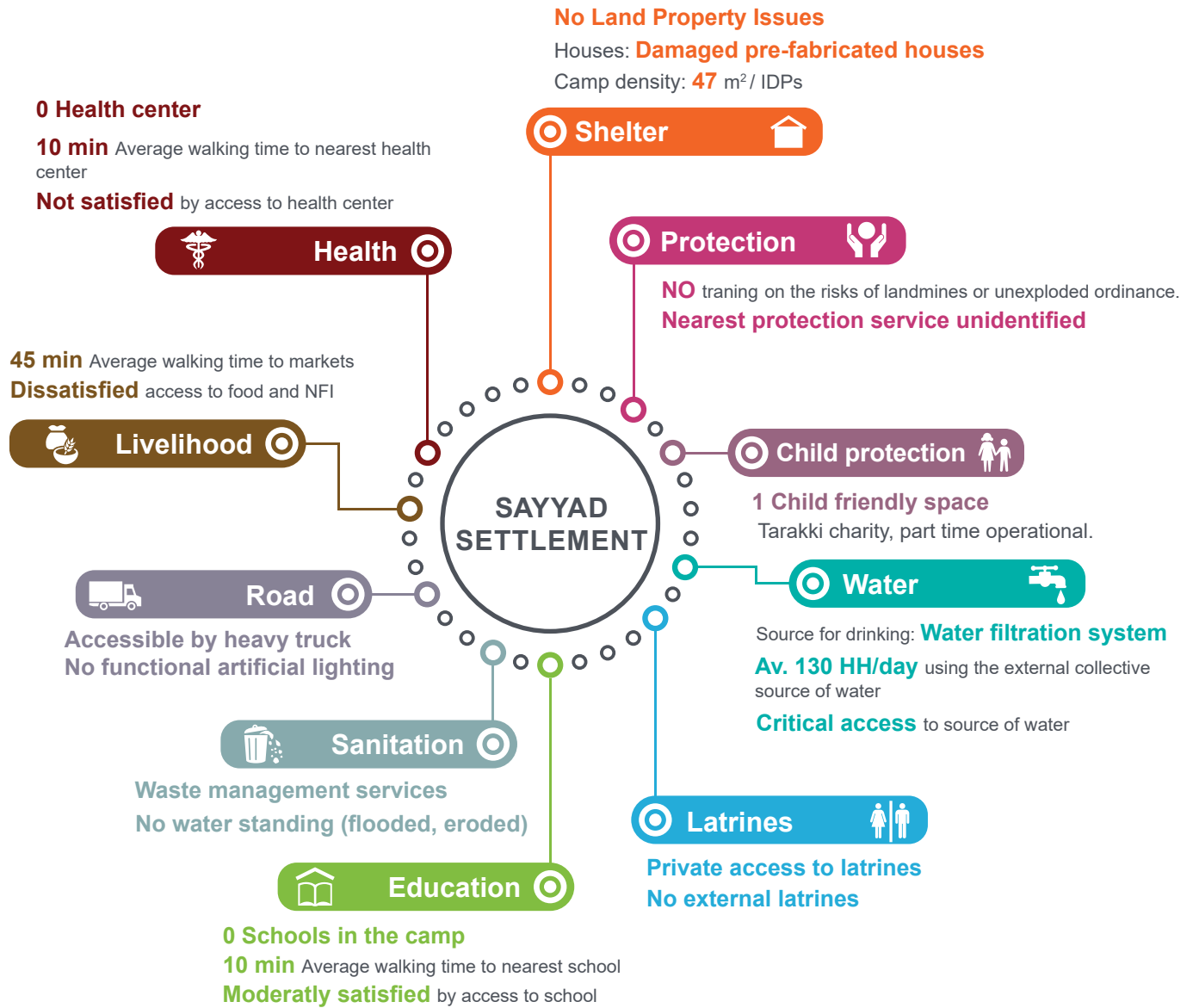
Perception of needs:

Critical

Perception of access to the camp:

Non-critical

ALFALLAH 2 SETTLEMENT





IDPs Camp

Airport way tawergha settlement

■ IDPs: 1760 (350 HH)



■ IDPs Origin City:

- Tawergha

	NEEDS	ACCESS
	Critical	Critical
	Very critical	Critical
	Non-critical	Very Critical
	Very Critical	Non-critical

Perception of needs:

Very Critical

Perception of access to the camp:

Non-critical

AIRPORT WAY TAWERGHHA SETTLEMENT





IDPs Camp

Brazilian Company settlement

■ IDPs: 101 (20 HH)



IDPs Origin City:

- Tawergha
- Tarhuna
- Wesheffana
- Zliten
- Sea'an
- Rujban
- Gheryan

	NEEDS	ACCESS
	Critical	Critical
	Very Critical	Critical
	No external latrines	Non-critical
	Non-critical	Non-critical

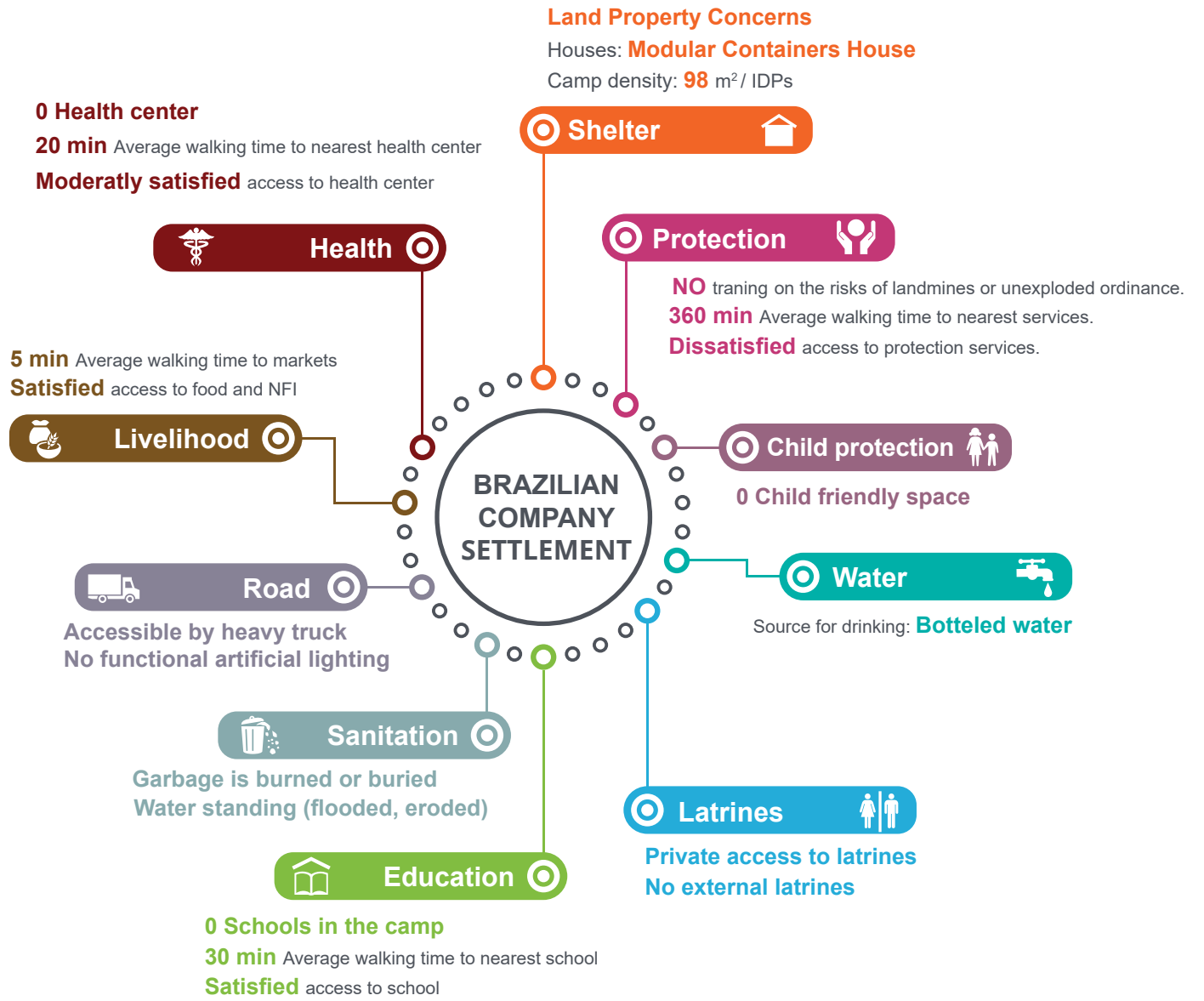
Perception of needs:

Critical

Perception of access to the camp:

Non-critical

BRAZILIAN COMPANY SETTLEMENT





IDPs Camp

Hay Alenteesar settlement

■ **IDPs:** 2000 (400 HH)



■ **IDPs Origin City:**

- Kikla

	NEEDS	ACCESS
	Critical	Non-Critical
	Critical	Critical
	No external latrines	Non-critical
	Very Critical	Non-critical

Perception of needs:

Critical

Perception of access to the camp:

Non-critical

HAY ALENTEESAR SETTLEMENT

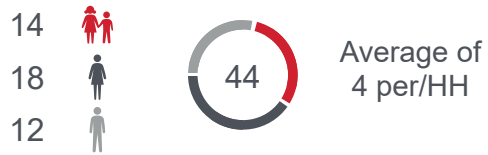




IDPs Camp





Hay Alenteesar 2 settlement

■ IDPs: 44 (12 HH)



■ IDPs Origin City:

- Tawergha
- Wersheffana
- Benghazi
- Nesma
- Azawia

	NEEDS	ACCESS
	Critical	Critical
	Critical	Critical
	No external latrines	Non-critical
	Very Critical	Non-critical

Perception of needs:

Very Critical

Perception of access to the camp:

Non-critical

HAY ALENTEESAR 2 SETTLEMENT





IDPs Camp

Hay Alzuhoor settlement

■ **IDPs:** 6550 (1092 HH)

No data available

No data available

No data available



Average of 6 per/HH

IDPs Origin City:

- Kikla
- Almshashia
- Sirte
- Benghazi

	NEEDS	ACCESS
	Critical	Critical
	Critical	Critical
	No external latrines	Non-critical
	Non-critical	Non-critical

Perception of needs:

Critical

Perception of access to the camp:

Non-critical

HAY ALZUHOOR SETTLEMENT

